

# Traditional and luxurious Kyoto experiences at "Machiya" "Nishijin-Ichii" Japanese style House in Kyoto



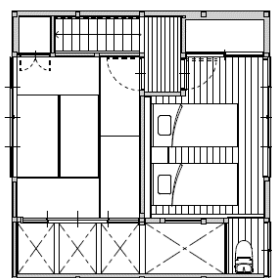
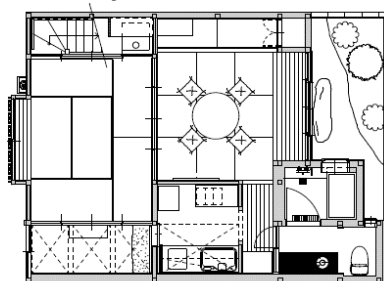
西障  
いちい  
上京区



• Nippon Express Travel is pleased to arrange "Machiya" house for your vocational rental in Kyoto. All the furniture was beautifully restored, but many parts of the house like glass sliding door, large beautiful beam and hidden stairway are still existed. Enjoy authentic and traditional Kyoto living, in conjunction with modern amenities and contemporary comforts. Machiya stay is perfect for the guests who want to experience a traditional Machiya stay and do not want the usual stay at Western style hotels.

Floor plan

1F



2F

Location	39-1 Suehiro-cho Kamigyo-ku, Kyoto
Capacity	2-4 people
Check-in/out	Check-in: From 3pm / Check-out: Until 10am
Parking	N/A (Please park at public parking near the Machiya.)
Floor plan	1st Floor: Entrance, 2 x Japanese Style Rooms, Cypress bath tub and Toilet 2nd floor: Bed Room, Japanese Style Room and Toilet
Bedding	1 x Twin Bed. (In case of more than 3 people, we will set up Japanese style Futon bedding.)
Facilities	Air conditioners, Free wi-fi, TV, Washing machine, Yukata, Kitchen facilities incl. Refrigerator, Microwave etc.

# <ROOM CHARGE>

\*Meals are NOT included. (JPY / per room, per night)

2019	1 January							2019	2 February							2019	3 March							2019	4 April						
Sun.	Mon.	Tue.	Wed.	Thu.	Dri.	Sat.	Sun.	Mon.	Tue.	Wed.	Thu.	Dri.	Sat.	Sun.	Mon.	Tue.	Wed.	Thu.	Dri.	Sat.	Sun.	Mon.	Tue.	Wed.	Thu.	Dri.	Sat.				
		1 D	2 C	3 B	4 A	5 B						1A	2 B						1 A	2 B		1 A	2 A	3 A	4 A	5 A	6 B				
6 A	7 A	8 A	9 A	10A	11A	12B	3 A	4 A	5 A	6 A	7 A	8 A	9B	3 A	4 A	5 A	6 A	7 A	8 A	9B	7A	8A	9A	10A	11A	12A	13B				
13B	14A	15A	16A	17A	18A	19B	10B	11A	12A	13A	14A	15A	16B	10A	11A	12A	13A	14A	15A	16B	14A	15A	16A	17A	18A	19A	20B				
20A	21A	22A	23A	24A	25A	26B	17A	18A	19A	20A	21A	22A	23B	17A	18A	19A	20A	21A	22A	23B	21A	22A	23A	24A	25A	26A	27B				
27A	28A	29A	30A	31A			24A	25A	26A	27A	28A			24A	25A	26A	27A	28A	29A	30B	28C	29C	30B								
														31A																	

2019	5 May							2019	6 June							2019	7 July							2019	8 August						
Sun.	Mon.	Tue.	Wed.	Thu.	Dri.	Sat.	Sun.	Mon.	Tue.	Wed.	Thu.	Dri.	Sat.	Sun.	Mon.	Tue.	Wed.	Thu.	Dri.	Sat.	Sun.	Mon.	Tue.	Wed.	Thu.	Dri.	Sat.				
			1B	2 B	3C	4C							1 B		1 A	2 A	3 A	4 A	5 A	6 B					1 A	2 A	3 B				
5B	6A	7 A	8 A	9 A	10A	11B	2 A	3 A	4 A	5 A	6 A	7 A	8 B	7 A	8 A	9 A	10A	11A	12A	13B	4 A	5 A	6 A	7 A	8 A	9 A	10B				
12A	13A	14A	15A	16A	17A	18B	9A	10A	11A	12A	13A	14A	15B	14B	15B	16A	17A	18B	19B	20B	11B	12A	13A	14A	15A	16A	17B				
19A	20A	21A	22A	23A	24A	25B	16A	17A	18A	19A	20A	21A	22B	21A	22A	23A	24A	25A	26A	27B	18A	19A	20A	21A	22A	23A	24B				
26A	27A	28A	29A	30A	31A		23A	24A	25A	26A	27A	28A	29B	28A	29A	30A	31A				25A	26A	27A	28A	29A	30A	31B				
							30A																								

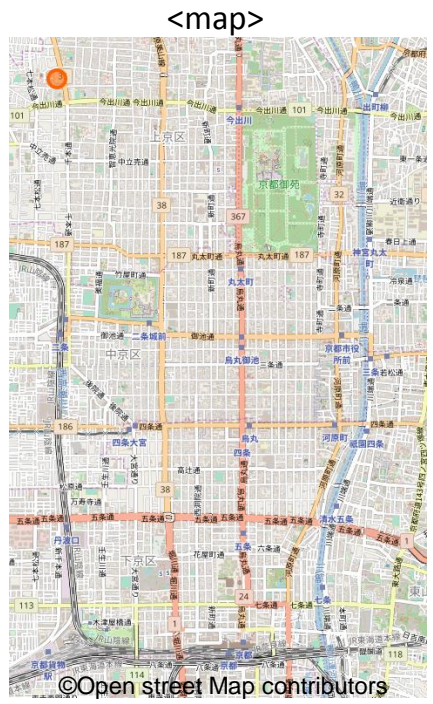
=Sat., Sun. and National Holidays

	Per room for 2 pax occupancy	Per room for 3 pax occupancy	Per room for 4 pax occupancy
A	22,000	29,760	35,360
B	24,160	33,000	39,680
C	26,320	36,240	44,000
D	28,480	39,480	48,320

(Incl. tax.)



\*\*\*You'll be requested to check-in at the information desk near Kyoto station between 3 and 9 p.m.. We'll be pleased to arrange the orientation tour of Kyoto with supplementary cost.



**\*Cancellation Rates**

- (1) If cancellation notice arrives Nippon Express Travel no less than 21 days prior to the check-in date : N/A
- (2) If cancellation notice arrives Nippon Express Travel within 8 – 20 days prior to the check-in date : 20% of the tour price
- (3) If cancellation notice arrives Nippon Express Travel within 2 – 7 days prior to the check-in date : 30% of the tour price
- (4) If cancellation notice arrives Nippon Express Travel on the day immediately before the check-in date : 40% of the tour price
- (5) If cancellation notice arrives Nippon Express Travel on the check-in date or no cancellation notice is received. : 100% of the tour price